

IGEA

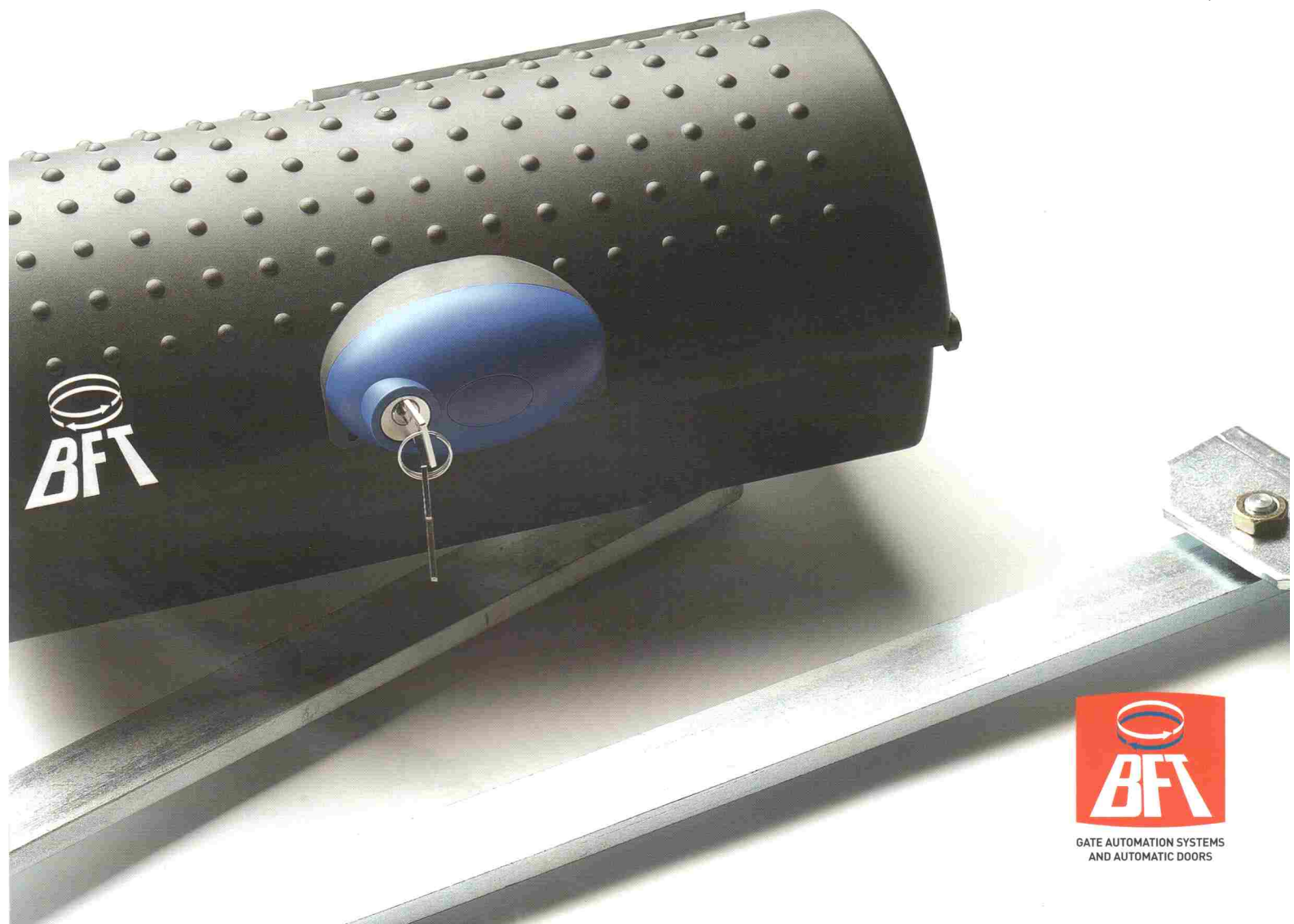
Automation for swing gates with max. leaf length of 2.5 m and max. weight of 250 kg, residential use

Irreversible actuator

Compact form and articulated arm

Completely new styling

Versatile installation even on large pillars

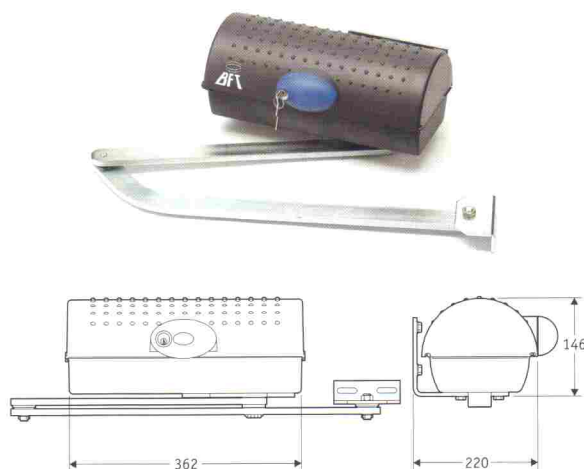


GATE AUTOMATION SYSTEMS
AND AUTOMATIC DOORS



IGEA

Automation for swing gates with max. leaf length of 2.5 m and max. weight of 250 kg, residential use



- **Great versatility and flexibility** of installation with IGEA.
- Its compact shape and articulated anti-shearing arm enables installation of pillar with a remarkable size.
- The **irreversible actuator** keeps the gate locked when open and closed.
- **Adjustable** microlimitswitches and capacitor built into the actuator.
- **Galvanized and painted levers.**

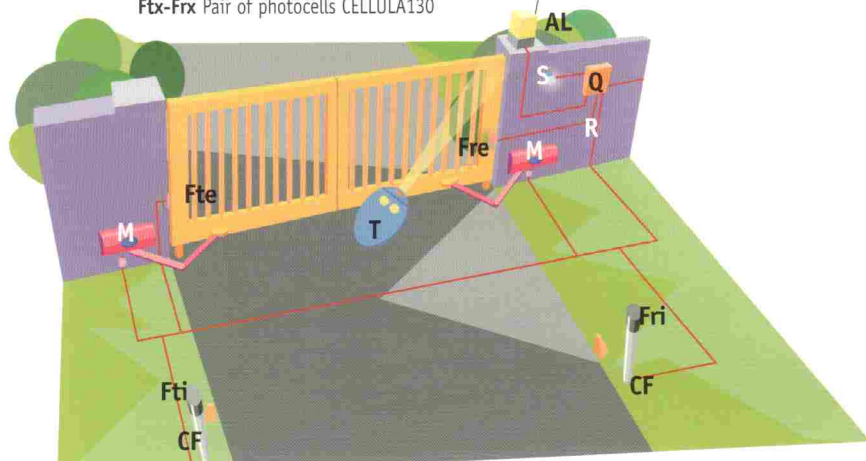
Technical features

Operator	IGEA
Power supply	230 V ± 10% 50Hz
Absorbed power	300 W
Thermal protection	integrated
Max. leaf length/weight	2.5 m/2000N (~200 kg); 2 m/2500N (~250 kg)
Leaf rotation speed	5.3°/sec.
Impact reaction	electric clutch on control panel
Manual manoeuvre	lever inside the cover
No. of manoeuvres in 24 hours	100
Environmental conditions	from -15 to +60°C
Degree of protection	IP 44
Actuator weight	160 N (~16 kg)
Dimensions	see figure

Example of installation

M operator IGEA
 Q Control board ALTAIR with built-in rolling code receiver
 T MITTO2 12V double-channel rolling code transmitter
 Ftx-Frx Pair of photocells CELLULA130

CF Pair of CC 130 posts
 AL LAMPO PA blinker with antenna SL433 mitter
 S INTRO key selector



Accessories



MITTO 2-12V / MITTO 4-12V: double-channel and four-channel transmitter with Rolling-Code coding.



LAMPO PA, SL433: blinker supplied with 230Vac and pre-set for antenna with 4-m cable (SL433 mod.).



CC130: pair of aluminium posts for CELLULA 130 photocells.



CELLULA130: flat, self-aligning photocell receiver-transmitter set, external installation, range up to 30 m, power supply 24Vac.



INTRO: outdoor key command. Recessed and post-mounted version.



ALTAIR



Control panel for one or two electromechanical single-phase actuators with a power of up to 300+300 W. 3 and 4 step logics with automatic or semi-automatic operation. Electronic

adjustment of motor torque. Rapid closing function. Pedestrian access input. Programmable delay of second motor, both on closing and opening. Supports the EELINK protocol. Digital setting of parameters and logics. Visualisation of the set values on an integrated multilingual display. Self-diagnosis function. Management of statistical parameters. Preset for the serial centralised control using the SCS accessory (on request). 433.92 MHz built-in rolling-code receiver and 63 codes with clonable algorithm on control panel. Extractable terminal bars for easier installation, maintenance or replacement operations.

For system composition and installation refer to the regulations in force in the country where the system is being installed. The indicated data are not binding. BFT reserves the right to make modifications without prior notice.